



Course Offerings*

- General Psychology
- Psychology of Adjustment
- Psychology of Human Sexuality
- Abnormal Psychology
- Introduction to Physiological Psychology
- Language, Learning, & Memory
- Lifespan Psychology
- Introduction to Personality
- Fundamentals of Psychological Research
- Social Psychology
- Cross-Cultural Psychology
- Psychology of Sex & Gender
- Seminar in Psychology
- Individual Studies in Psychology

*Approved by the Curriculum Information Management Subcommittee 5/09

Check BC online catalog for most up to date course offering: www.bellevuecollege.edu/catalog/courses/

It is possible to earn a Concentration in Psychology as part of the AAS Degree. See the Department Chair for more information.



Contact the Psychology Department

www.bellevuecollege.edu/socsci/psych/

Psychology Department
3000 Landerholm Circle SE
Room D110
Bellevue, WA 98007
(425) 564-2331



**BELLEVUE
COLLEGE**

Become Exceptional

3000 Landerholm Circle SE • Bellevue, WA 98007

www.bellevuecollege.edu

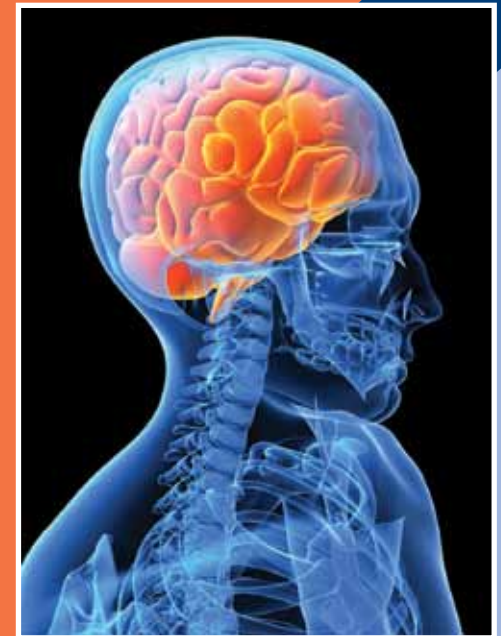
Bellevue College reaffirms its policy of equal opportunity regardless of race or ethnicity, color, creed, religion, national origin, sex, sexual orientation including gender identity or expression, age, marital or family status, disability, or status as a disabled veteran or Vietnam era veteran. Please visit www.bellevuecollege.edu/equal.asp.

PS 5-09

**BELLEVUE
COLLEGE**

Psychology

*A department of the Social Science
Division of Bellevue College*



Psychology is the scientific study of behavior and mental processes.

www.bellevuecollege.edu/socsci/psych/



The Study of Psychology

Psychology is the scientific study of behavior and mental processes. We can think of Psychology as having three faces. It is a discipline, a major subject of study in colleges and universities. It is a science, a method of conducting research and understanding behavioral data. Psychology is also a profession, a calling that requires one to apply special knowledge, abilities and skills to solve human problems. Psychologists study a wide range of human and animal behavior, ranging from child development to abnormal behavior, from brain functioning to personality measurement. In contrast to other behavioral sciences, psychology typically focuses on the individual and the physiological, cognitive, and social processes that impact individual behavior.

The Psychology Department offers lower division courses for psychology transfer students and has a partnership with Eastern Washington University's psychology BA program at BC. The department also offers general education classes and support courses for Nursing and Interior Design.

Except for physiological psychology, which counts as a natural science, all psychology classes fulfill social science distribution requirements for BC's associate in arts and sciences direct transfer degree.

Possible Careers

Education, Organizational and Industrial Consulting, Marketing and Advertising, Research, Human Resources, Criminal Justice, Medical Rehabilitation, Social Services, Mental Health Counseling, and Sports Psychology.

Students Please Note

To ensure your BC Associate in Arts & Sciences degree requirements are met, you need to review your Educational Plan with a Psychology Advisor. Please refer to the Academic Progress Standards. For assistance with course selection for specific universities and specific degree requirements in this discipline, contact the department faculty advisor or attend group Psychology information sessions.

Psychology Department Faculty

The Psychology Department welcomes you to come and talk to our faculty to get a sense of who we are and to answer any questions you may have about the program.

Helen Taylor, Ph.D., Chair

(425) 564-2328
helen.taylor@bellevuecollege.edu

Virginia Bridwell, M.S.

(425) 564-2198
virginia.bridwell@bellevuecollege.edu

Dennis Wanamaker, Ed.D.

(425) 564-2336
dennis.wanamaker@bellevuecollege.edu

Carol Anderson, M.S.

(425) 564-2327
carol.anderson@bellevuecollege.edu

Suggested courses for students pursuing a Psychology major at the university level.

Associates in Arts & Sciences Degree

Direct Transfer Agreement (AAS-DTA)

See AAS-DTA worksheet for complete approved course distribution list

Basic Skills:

Written Communication:

- English Composition and The Research Paper* ... 10

Quantitative & Symbolic Reasoning:

- Precalculus I or College Algebra for Business and Social Science (*discuss with advisor*) 5

Humanities*: (*select from approved distribution list*) 15

Social Science*: 15

- Introduction to Sociology*
- Survey of Anthropology*
- General Psychology

Science/Math*: (*select from approved distribution list*) 15

- Introduction to Physiological Psychology*
- General Biology*

Electives*: (*discuss with Psychology Advisor*) 30

- Fundamentals of Psychological Research*
- Additional Psychology Courses*

Total 90 credits

**Recommended courses as part of this degree.*

For more transfer information, go to:

www.bellevuecollege.edu/advising/transfer.asp

These courses are recommended as guidelines for state transfer and student pursuing Psychology as a major at the university level. For assistance with course selection, specific degree requirements or additional information on careers in this major, contact the department faculty advisors. Students are responsible for checking program admission requirements to individual participating universities and colleges as requirements change.

www.bellevuecollege.edu/socsci/psych/