



BELLEVUE  
COLLEGE

# Diagnostic Ultrasound Technology Program

3000 Landerholm Circle SE  
Bellevue, WA 98007-6484  
(425) 564-1000

[We are an equal opportunity institution](#)



BELLEVUE  
COLLEGE

# Diagnostic Ultrasound Technology Program

Section I

Program Overview

Program Information  
Application Packets  
Available on-line

[www.bellevuecollege.edu/health/ultrasound](http://www.bellevuecollege.edu/health/ultrasound)

Bellevue College does not discriminate on the basis of age, gender, sexual orientation or ethnic background.

# Program Accreditation

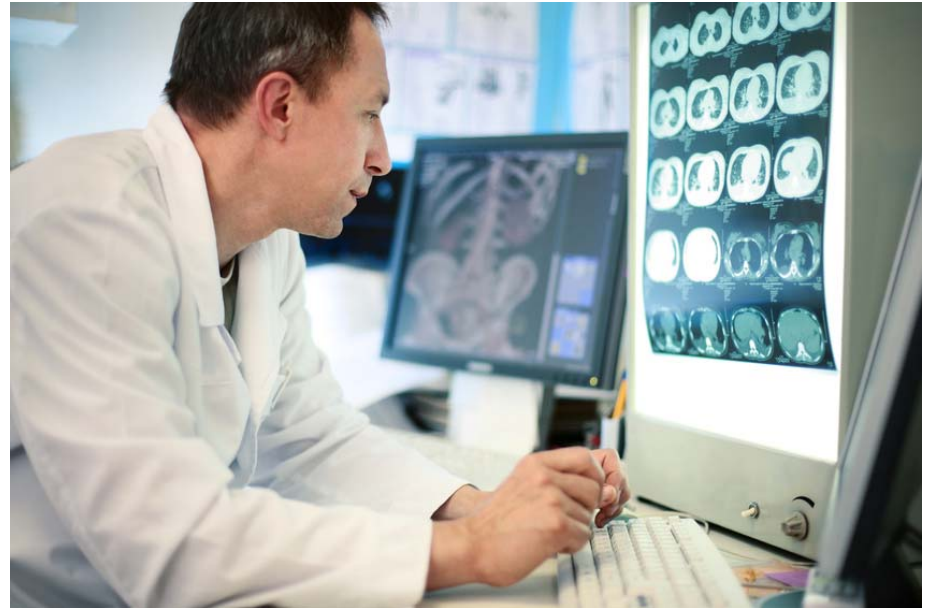
Joint Review Committee –Diagnostic Medical  
Sonography / CAAHEP

Cardiac and General Concentrations

[www.jrcdms](http://www.jrcdms)

[www.caahep.org](http://www.caahep.org)

- 2 Year - Associate of Arts Degree (120 cr)
- Full Time - 15-18 credits per quarter
- New Class Begins Each Fall Quarter
- Graduation end of Summer quarter – 2<sup>nd</sup> year



# Program Overview

- Program entry is by selective admission.
- Applicants must complete prerequisite courses by the end of WINTER quarter of the year they apply for entrance.
  - ie;\* to be considered for acceptance in Fall of 2011, you must have completed all prerequisite courses by the end of Winter quarter 2011....no exceptions.

# Selective Admission Program

- 15-20 students admitted each year.
- Usually 100 qualified applicants each year.
- Selection committee reviews applicants
- Selection made and applications notified by mid June.



# Program Overview

- FULL TIME 15-18 credits per quarter
- 8 consecutive quarters / 2 Year program
- Begins each Fall quarter
- Associates of Arts Degree
- 8 Required Prerequisite courses
- ARDMS Credentialing Exams - qualified upon graduation
  - [www.ardms.org](http://www.ardms.org) , [www.arrrt.org](http://www.arrrt.org)
- ONLY General and Cardiac Concentrations offered
- Students select one specialty by end of second quarter.

# Key Program Outcome

- Prepare graduates to become credentialed through national examination and for entry level positions as either a general sonographer or echo-cardiographer.

# Clinical Concentrations Offered

## General Sonography

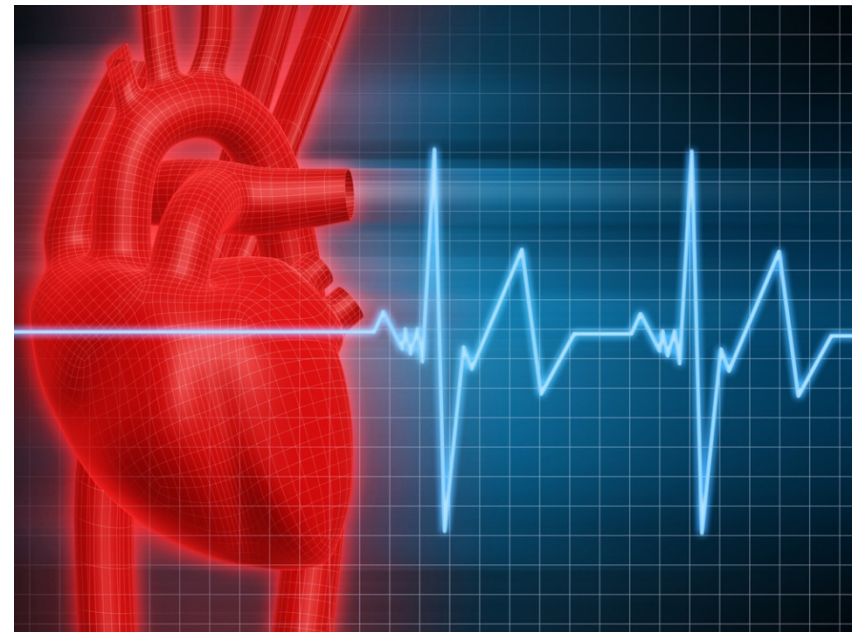
- Abdomen
- Gynecology
- Obstetrics
- Superficial Structures
  - Breast
  - Thyroid
  - Testicles



# Clinical Concentrations Offered

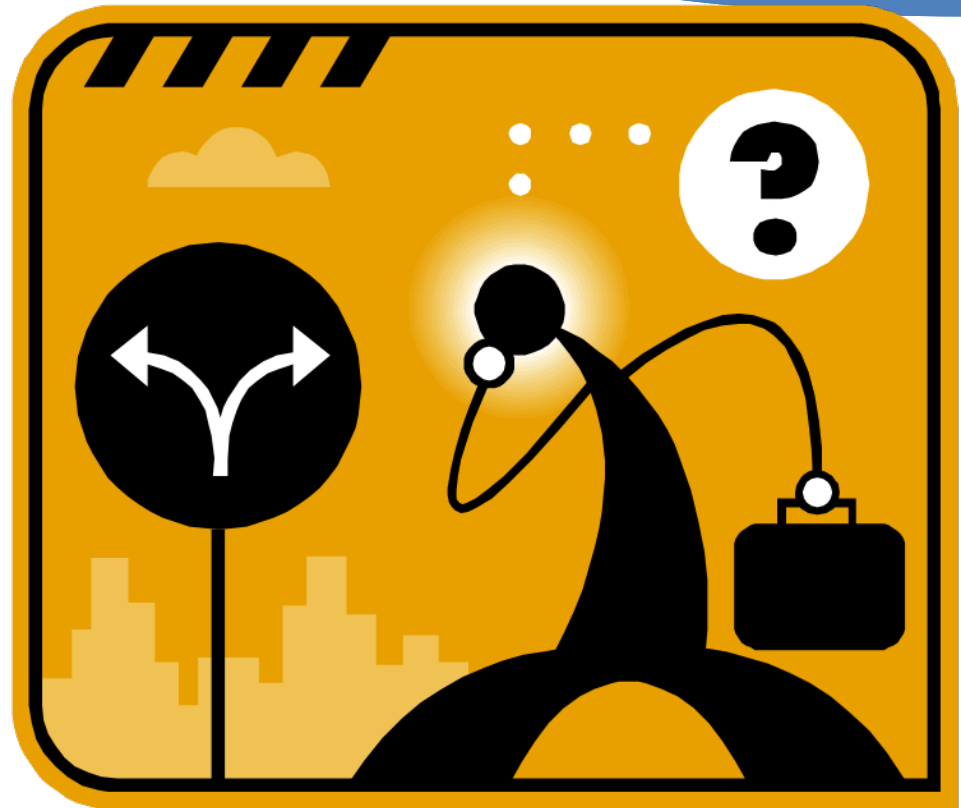
## Cardiac Sonography

- Adult  
Echocardiography



# Clinical Concentration - Selection

- Students choose ONE concentration before Spring quarter of first year.
- General OR Cardiac
- Internship in either general or cardiac concentration



# Other Clinical Concentrations

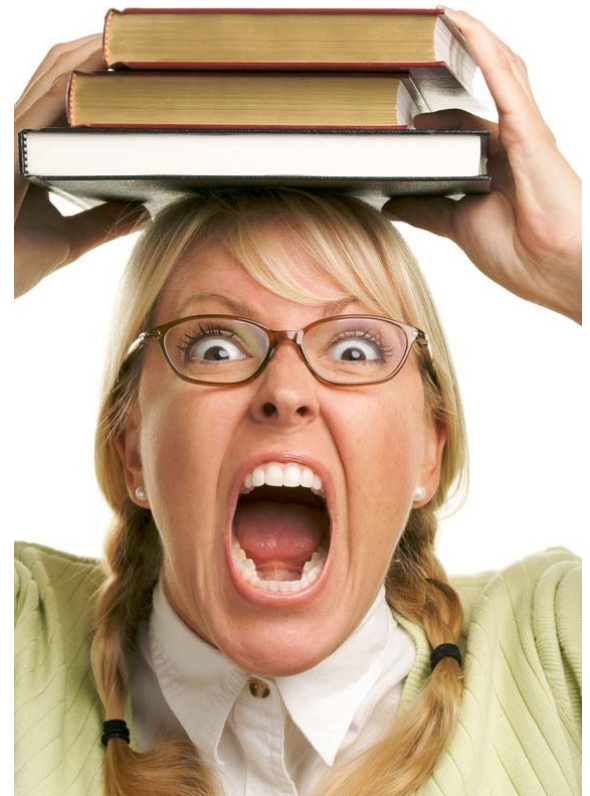
- Bellevue College accredited for general and cardiac ONLY.
- Vascular – not available as clinical concentration at Bellevue College
- Other specialty credentials can be pursued after graduation as a practicing sonographer
- [www.ardms.org](http://www.ardms.org)



# PROGRAM HIGHLIGHTS

## 1ST YEAR

- 1st year FULL TIME is in the classroom
- Lecture, Scanning Lab (live scan classmates)
- Follow college calendar for breaks & holidays
- Classes meet at different times  
days, evenings and any day M-F



FALL Quarter	Winter Quarter	Spring Quarter	Summer Quarter
<b>First Year</b>			
DUTEC 100 3cr Introduction to Ultrasound	DUTEC 110 4cr Ultrasound I – Abdominal Scanning & Techniques (Gen. only)	DUTEC 106 3cr Pathophysiology II	DUTEC 113 3cr Pathophysiology IV
DUTEC 102 3cr Practical Aspects of Sonography	DUTEC 112 3cr Pathophysiology III	DUTEC 120 5cr Ultrasound II – Obstetrics & Gynecological Tech (Gen. only)	DUTEC 130 3cr Ultrasound III – Small Parts Intraoperative Tech (Gen. only)
DUTEC 105 3cr Pathophysiology I	DUTEC 135 3cr Ultrasound Equipment I	DUTEC 145 4cr Ultrasound Equipment II	DUTEC 165 3cr Ultrasound Equipment III
DUTEC 107 7cr Human Cross-Section Anatomy	DUTEC 150 4cr Basic Echocardiography (Echo only)	DUTEC 155 5cr Ultrasound IV – Echocardiography (Echo only)	DUTEC 180 3cr Advanced Studies: General Ultrasound (Gen. only)
	DUTEC 170 3cr Ultrasound Physics & Instrumentation I	DUTEC 160 3 cr Ultrasound V – Peripheral Vascular Scanning Tech	DUTEC 181 3cr Advanced Studies: Echo – Vascular (Echo only)
	DUTEC 171 3 cr Ultrasound Physics & Instrumentation I		DUTEC 200 3 cr EKG for Echocardiographers (Echo only)
<b>Second Year</b>			
DUTEC 210 15 cr Clinical Internship I	DUTEC 220 15 cr Clinical Internship II	DUTEC 230 15 cr Clinical Internship III	DUTEC 240 15 cr Clinical Internship IV

Class schedules determined by program chair, and may change without notice.

# PROGRAM HIGHLIGHTS

## 2<sup>nd</sup> YEAR

- 2<sup>nd</sup> year-Internship
- 36-40 hours per week
- INTERNSHIP sites may be assigned in distant locations from your residence.
- You may need to relocate or commute a long distance to your clinical site



# Clinical Internship Sites

- > 50% of internship sites in greater Seattle area
- Students may be expected to drive up to 2 hours each way to site, or move to the clinical site location.
- Students (usually) are assigned to one site for first six months, different site for second six months
- Students are assigned to sites based on multiple factors (sites available, specialty chosen, learning environment)
- Site assignments announced end of first year, summer quarter

# General Program Requirements

(after an applicant is accepted in to the program)

- CPR/First Aid – Health Care Provider Level (required)
- National Background Check – After Accepted to Program
- Immunization Records, Hepatitis B Vaccination, TB
- Access to and use of MS Word and PowerPoint
- Computer with High Speed Internet Connection
- Printer / FAX / Scanner device for clinical documentation
- Transportation to college and clinical internship site.

# COSTS OF BC PROGRAM

tuition may change, visit

[www.bellevuecollege.edu](http://www.bellevuecollege.edu) for most current

- Tuition = approximately \$1,000.00-\$1,200.00 / qtr  
TUITION INCREASES EXPECTED in 2010. See college registration website for updated fee's and tuition.
- Books = approximately \$2000 total (\$1000 at beginning of 1st quarter)
- Miscellaneous (lab coats, liability insurance) \$150
- SDMS student membership fee's \$40.00
- ARDMS Physics Exam approx \$250/end of first year
- Lab Fee's \$90 / 8 classes (approx \$750.00)
- Potential costs related to relocation or commuting to campus or second year clinical internship site.



# Tuition – Residency Status and Out of State Tuition

- For details on out of state tuition rates and regulations, please contact:

Residency Office at (435) 564-4143

- OR visit:

[www.bellevuecollege.edu/enrollment/admissions/eligibility/](http://www.bellevuecollege.edu/enrollment/admissions/eligibility/)

# Financial Aid

Many financial aid, grants and scholarships are available through the Financial Aid office.

Visit:

<http://bellevuecollege.edu/enrollment/financial/>

for more info.

