

Dear Student,

You are receiving this correspondence from Bellevue College for the Disability Resource Center in partnership with the DO-IT (Disabilities, Opportunities, Internetworking, and Technology) Center. The purpose is to inform you about many opportunities available to you. We invite you to review these opportunities and participate in activities that interest you.

Bellevue College and the DO-IT staff sincerely wish you a successful and enjoyable college experience.

Sincerely,



Sheryl Burgstahler  
Director  
DO-IT  
4545 15th Ave NE, Suite 100  
Seattle, WA 98105

Susan Gjolmesli  
Director  
Disability Resource Center  
3000 Landerholm Circle, S.E.  
Bellevue, Washington 98007

## Are you a student with a disability:

- who wants work-based learning experiences?
- who wants access to mentors with disabilities?
- who is interested in science, technology, engineering, mathematics, or computing?

If you've answered yes to any of these questions, YOU should DO-IT!



DO-IT (Disabilities, Opportunities, Internetworking, and Technology) is based at the University of Washington, and has four different programs for high school, two-, and four-year college students with disabilities.

## Join a DO-IT Team

The *AccessComputing* Team is for students interested in computing and information technology careers, while the *AccessSTEM* Team is for students more generally interested in science, technology, engineering, or mathematics (STEM). Both teams provide opportunities to locate internships; participate in work-based learning experiences; attend college and career transition fairs; develop self-advocacy skills and accommodation strategies; and network with peers, mentors, and professionals. Application forms can be found at [www.washington.edu/accesscomputing/team\\_app.html](http://www.washington.edu/accesscomputing/team_app.html) and [www.washington.edu/doit/Stem/team\\_app.html](http://www.washington.edu/doit/Stem/team_app.html).

To find the right program for you, contact DO-IT Counselor Tami Tidwell at 206-685-3648 (V/TTY) or [tamitha@u.washington.edu](mailto:tamitha@u.washington.edu).

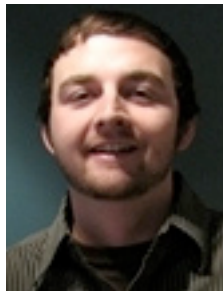
# Meet the Disability Resource Center Staff!



**Susan Gjølmesli,  
Director**

425-564-2392  
[sgjolmes@bellevuecollege.edu](mailto:sgjolmes@bellevuecollege.edu)

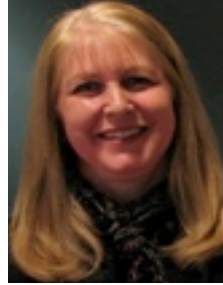
Susan is our program Director who has been a disability advocate for over thirty years. She graduated from Gonzaga University as an Education major. Her favorite part of the job is getting to know the students in the program. Bjorn, Susan's husband, is from Norway and a member of the Puget Sound Norwegian community. They often travel to Norway to visit family. Susan enjoys a wide array of friends, gardening, and caring for her Seeing Eye dogs, Nelly & Inez.



**Phil McGilton,  
Assistive Technology  
Specialist**

425-564-2015  
[pmcgulto@bellevuecollege.edu](mailto:pmcgulto@bellevuecollege.edu)

Phil completed an AAS at Bellevue College, his BA in Social and Behavioral Science, and his Assistive Technology Applications Certification. He specializes in the production of alternative media formats including electronic text, Braille, tactile graphics, and audio files. Phil loves to head up to the mountains for snowboarding, hiking, and camping.



**Carol Grant, Assistant Director**

425-564-2699  
[cagrants@bellevuecollege.edu](mailto:cagrants@bellevuecollege.edu)

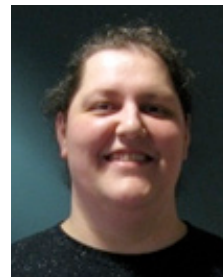
Carol is the Assistant Director. She manages accommodations and helps with the matriculation of freshmen students. Carol holds a Masters Degree in Psychological Counseling. She enjoys Antiquing, spending time with her family, and reading a good book.



**Dimitri Azadi,  
Deaf Services Manager**

425-564-4159  
Video Phone: 425-440-2025  
TTY: 425-564-4110  
[dazadi@bellevuecollege.edu](mailto:dazadi@bellevuecollege.edu)

Dimitri coordinates interpreting, CART, assistive listening, and other services for deaf students. He holds national certification through the Registry of Interpreters for the Deaf (RID) and is completing his B.A. in Leadership and Diversity Studies. Dimitri loves reading, ice skating, and language and culture studies.



**Amy McCrory,  
Program Assistant**

425-564-2498  
[amccrory@bellevuecollege.edu](mailto:amccrory@bellevuecollege.edu)

Amy has worked at Bellevue College for a decade and specializes in academic enrollment, assessment accommodating, test proctoring, and initiating disability services. She enjoys reading, spending time with family, and walking her dog.

---

## Disability Resource Center

The Disability Resource Center (DRC) is dedicated to service excellence in the provision of comprehensive and flexible accommodation plans which contribute to the successful academic endeavors of qualified students who have disabilities. The DRC works in innovative ways to provide teaching and learning opportunities to college employees and community partners who further the understanding and success of the students we serve. The DRC nurtures and coaches its students in skills necessary to achieve success academically and in promoting essential life skills which will integrate students who have disabilities into the overall pluralistic fabric of the community.

For more information about the DRC, visit their website at <http://bellevuecollege.edu/drc/>.

## Academic Internships

Through the Academic Internship Program, you can earn course credits while working and learning in a professional environment. You can apply knowledge gained in the classroom in a work setting, enriching the learning experience. Bellevue College works with companies, community organizations, and government agencies in the Puget Sound and nationwide to provide our students with internships that are flexible, student-centered and learning intensive, and that will be useful in preparation for your future career.

- Gain valuable work experience
- Explore a career
- Continuous enrollment
- Earn 2-5 credits
- Flexible dates & schedules
- Scholarships may be available

To learn more, visit the internships website at <http://bellevuecollege.edu/internships> or call 425-564-2279 to schedule a one-on-one appointment.



### Network! Network! Network!

Take advantage of networking opportunities through the career center and professional organizations, because who you know, as well as what you know, can determine your success. Create your own opportunities with friends, family, and co-workers.

## Work-Based Learning

Research shows that students with disabilities who participate in work-based learning experiences are more successful than their peers who do not. Specifically, internships, job shadows, informational interviews and other work-based learning experiences help students:

- Pay for their education and gain academic credit.
- Develop job-searching skills, resumes, and cover letters.
- Clarify academic and career interests.
- Broaden human relation skills through interaction with co-workers.
- Gain exposure to facilities not available on campus.
- Expand list of contacts for employment after graduation.
- Practice disclosing their disability and requesting accommodations.

Kayla Brown, a Bellevue College student, is a great example of someone who has utilized existing programs to find work-based learning opportunities. As a Scholar in the *DO-IT Program* at the University of Washington, she learned the fundamentals of having a successful educational career through various workshops aimed at school, career preparation, and independence. Through the *AccessSTEM* project, she completed an internship at The Kindering Center, a non-profit organization dedicated to assisting infants with developmental disabilities. During this internship, Kayla learned about non-profit management. Her second internship was an *AccessComputing* project. Through this internship, she used technology that she had not been exposed to in the past. Her projects have included streamlining the captions for the *DO-IT* online video database and learning to manage documents using InDesign to create fully accessible PDFs of *DO-IT* publications. Kayla hopes to transfer to the University of Washington and major in Psychology.

Work-based learning is not only fun and a great learning experience, but it also helps you build an impressive resume and gain confidence for the future. For more information about the value of work-based learning, read the *DO-IT* publication *It's Your Career: Work-Based Learning Opportunities for College Students with Disabilities* at: [www.washington.edu/doit/Brochures/Careers/worklearn.html](http://www.washington.edu/doit/Brochures/Careers/worklearn.html).

# Scholarships

## Educational Opportunity Grant

(Due July 15, 2009)

The Educational Opportunity Grant (EOG) program provides \$2,500 grants to financially needy Washington residents as an incentive to complete their first bachelor's degree at an eligible four-year college. Students must already have earned an associate of arts or sciences degree or achieved junior class standing. For application instructions, visit [www.hecb.wa.gov/paying/waaidprgm/eog.asp](http://www.hecb.wa.gov/paying/waaidprgm/eog.asp).

## Assistance League of Seattle

(Ongoing)

The Assistance League of Seattle provides scholarships for tuition and books to Greater Seattle area community colleges. The goal of these scholarships is to help students in need who seek an education, but may not qualify for traditional scholarships. Scholarship amounts vary and applications are accepted on an ongoing basis. For more information, see <http://seattle.assistanceleague.org/ps.projects.cfm>.



## TRiO

The TRiO Student Support Services program furthers the Bellevue College Mission of educational excellence and equal access by providing first generation college students with limited income and/or disabilities a multiplicity of academic and personal support services: study skills development to achieve academic success, tutoring to master course content, and intensive academic and personal advisement to build confidence and promote student success. For more information on TRiO, go to <http://bellevuecollege.edu/TRiO/>.

---

## About this Publication

This newsletter is provided by DO-IT for Bellevue College students. Its purpose is to inform students with disabilities about some of the many opportunities available to them. Access the alternate version at [www.washington.edu/doit/Stem/articles?335](http://www.washington.edu/doit/Stem/articles?335). To be notified of future events, submit program inquiries, or make newsletter content suggestions, contact Tami Tidwell at 206-685-3648 (voice/TTY) or [tamitha@u.washington.edu](mailto:tamitha@u.washington.edu). This publication was developed with funding from the National Science Foundation (NSF) grant #HRD-0833504. The contents do not necessarily represent the policy of the NSF and you should not assume their endorsement.

Copyright © 2009, University of Washington. Permission is granted to copy these materials for educational, noncommercial purposes provided the source is acknowledged.

DO-IT, University of Washington  
Sheryl Burgstahler, Director  
Tami Tidwell, Project Coordinator  
Debra Zawada, Project Coordinator  
Scott Bellman, Project Coordinator  
4545 15th Avenue NE, Suite 100  
Seattle, WA 98105-4527  
206-685-DOIT (voice/TTY)  
[doit@u.washington.edu](mailto:doit@u.washington.edu)  
[www.washington.edu/doit](http://www.washington.edu/doit)



University of Washington  
College of Engineering  
UW Technology Services  
College of Education